



# Pack 507's Guide for New Families

## Welcome to the Adventure of Cub Scouting!

(It's not just for kids)

At tonight's meeting, we will:

- ❖ Inform boys and parents about Cub Scouting
- ❖ Sign-up for Cub Scouting
- ❖ Organize Boys into Dens
- ❖ Recruit Adult Leaders

#  
#

**Cubmaster:** Joe Scouter  
770-555-1212  
**Committee Chair:** Sue Daisey  
770-555-1212



# Welcome to **Cub Scout Race to Scouting**

2006-2007 School Year

## **TONIGHT'S AGENDA**

*(about 1 to 1½ hours)*

- Sign-Up / Hand out ~~Scout #3 : 6th x 1st #10 hz #10 p 10v~~
- Pledge of Allegiance
- Opening Comments
- What is Cub Scouting?
- Kids' Breakout
- How are the Cub Scouts Organized?
- Ranks and Advancement
- How Much Time is Involved?
- How Much does Scouting Cost?
- Fill out Applications and Collect Dues
- Form Boys into Dens
- Boys Re-join Meeting
- Closing



# Welcome to **Cub Scout Race to Scouting**

2006-2007 School Year

## WHAT IS CUB SCOUTING?



Cub Scouting can be described with just one word, FUN! Cub Scouting is a year-round family program designed for boys in the 1<sup>st</sup> through 5<sup>th</sup> grades. Parents, leaders, and organizations work together to achieve the following:

- Influencing the development of character and encouraging spiritual growth
- Developing habits and attitudes of good citizenship
- Improving understanding within the family
- Strengthening the ability to get along with and respect other people
- Fostering a sense of personal achievement by developing new interests and skills
- Showing how to have fun and do one's best
- Providing new and exciting things to do
- Preparing them to become Boy Scouts

Cub Scouting is for families. Scouting has always been a support to families as well as to organizations to which families belong. Cub Scouting provides opportunities for families to work and play together, to have fun together, and even to get to know each other a little better.

This year, Pack 507 will have:

- 3 Campouts
- Popcorn Sale
- Raingutter Regatta
- Pinewood Derby
- Blue & Gold Banquet
- Charity Car Wash
- Medieval Cavalcade Booth
- 3 Summertime Outings
- and that's just Pack activities, there are also Den activities, too ....



# Welcome to **Cub Scout Race to Scouting**

2006-2007 School Year

## **HOW ARE THE CUB SCOUTS ORGANIZED?**

### **1. Your Boy is a Member of a Den**

- a. A den has 5 to 9 boys grouped by age/grade
- b. The den meets 2 to 4 times per month
- c. The den is led by a Den Leader (a parent of one of the boys in that den)
- d. The Den Leader can be assisted by an assistant Den Leader, a Den Chief (an older Boy Scout), and a Denner (a Cub Scout from that den)
- e. Den meetings have games, crafts, songs, ceremonies, and lots of fun
- f. Den meeting usually last about 1 to 2 hours

### **2. Your Boy is a Member of a Pack**

- a. A pack is made up of several dens
- b. The pack meets once a month – all Cub Scout families attend
- c. The monthly pack meeting is led by the Cubmaster
- d. The pack meeting is the climax of the month's den meetings and activities
- e. Pack meetings have games, skits, stunts, songs, ceremonies, entertainment, and presentation of badges that the boys earned that month

### **3. The Pack is Run by the Pack Committee**

- a. The pack committee is made up of a group of qualified adults appointed by the chartered organization to administer the program of the pack. Usually the committee members, as well as other pack leaders, are parents of boys in the pack.
- b. The committee meets once a month
- c. The committee is led by a committee Chairperson and the Cubmaster
- d. The committee plans den and pack meetings around the monthly theme
- e. The committee selects leaders, performs record keeping, manages pack equipment, helps trains leaders, and recognizes leaders.

### **4. The Pack is Owned by the Chartered Organization**

- a. Chartered organizations include schools, parent-school associations, religious organizations, service clubs, and other groups interested in youth
- b. The chartered organization approves leaders, provides a meeting place, and operates packs within the guidelines and policies of the chartered organization and the Boy Scouts of America



# Welcome to Cub Scout Race to Scouting

2006-2007 School Year

## HOW ARE THE CUB SCOUTS ORGANIZED? (con't.)

- c. The chartered organization selects a chartered organization representative who serves as a liaison between the pack and organization
- d. Our chartered organization is the Neighborhood Church.

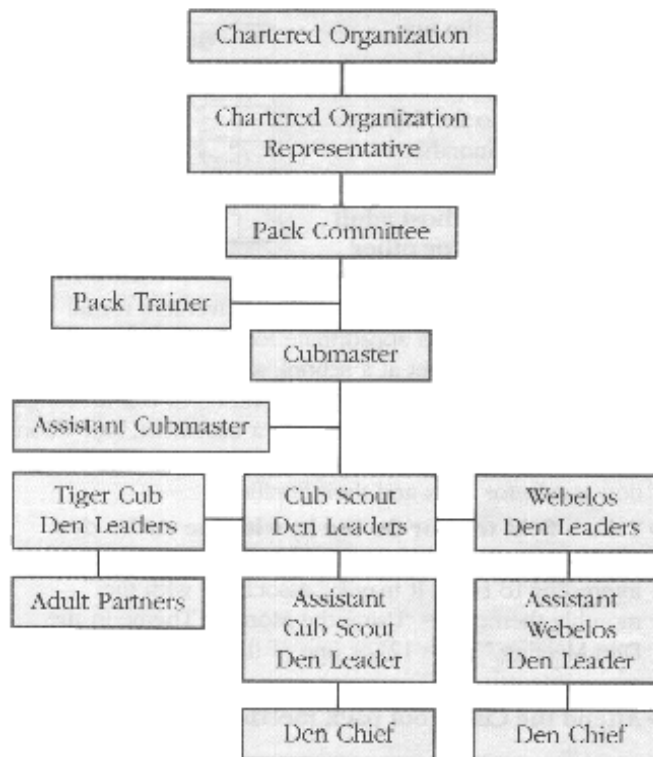
### 5. The Pack is part of a District

- a. Our Pack is part of the Chattahoochee District (CD)
- b. CD organizes and supports the packs
- c. CD serves over 1,500 youth in over 50 different packs/troops/crews
- d. A district is staffed mostly by volunteers and some professional Scouters.

### 6. The District is part of a Council

- a. CD is one of 18 Districts that makes up the Atlanta Area Council (AAC)
- b. The AAC serves a membership of 72,000 youths and 13,000 adult leaders
- c. The AAC maintains three camping properties and the Scout Shops

## Pack Organization Chart





# Welcome to Cub Scout Race to Scouting

2006-2007 School Year

## RANKS AND ADVANCEMENT

Though there are many activities for the Scout to do throughout the year, the main goal is to complete the requirements to earn their badge. Which badge the Scout works on depends on his age. Most badges are awarded in the Spring of the current Scouting year.

The responsibility of a boy's advancement in Cub Scouting lies with the family and not with the Den or Pack. Some advancement requirements are done at den meetings, but most are completed at home with the family.



A Tiger Scout who is currently in the 1<sup>st</sup> grade works on the Family Activity, Den Activity, and "Go See It" for each of the 5 achievements. Tiger Cubs must have an adult partner.



All boys in 2<sup>nd</sup> through 5<sup>th</sup> grade earn the Bobcat badge first by learning the Cub Scout Promise, the Law of the Pack, handshake, salute, sign, motto, and the meaning of "Webelos". A boy only receives the Bobcat Badge once. After receiving the Bobcat badge, the boy works on requirement on his grade.



A Cub Scout who is currently in the 2<sup>nd</sup> grade works on the twelve achievements to earn the Wolf badge.



A Cub Scout who is currently in the 3<sup>rd</sup> grade works on 12 of the 24 achievements to earn the Bear badge.



A Cub Scout who is currently in the 4<sup>th</sup> grade and 5<sup>th</sup> grade transfers to a Webelos den. Webelos I dens are for boys in the 4<sup>th</sup> grade. Webelos II dens are for boys in the 5<sup>th</sup> grade. The boy works on the requirements for the Webelos badge and the Arrow of Light, Cub Scouting's highest rank, which prepares him for Boy Scouting.

In addition, boys can earn Belt Totems (charts progress of Tiger cubs), Progress Beads (as they partially complete their respective badge), Arrow Points (completing Achievements in excess of those required for their particular badge), Belt Loops (learning athletic and academic skills), and Pins (mastering athletic and academic skills).



# Welcome to **Cub Scout Race to Scouting**

2006-2007 School Year

## **HOW MUCH TIME IS INVOLVED?**

### **PACK TIME COMMITMENT:**

We have a pack meeting once a month. The purpose of this meeting is entertain, make announcements, and for recognition awards. This meeting is held on the third Tuesday of every month from 7:00pm to 8:00pm at the Neighborhood Church. We will also have one pack activity per month (e.g. campout, Pinewood Derby, Blue & Gold Banquet).

### **DEN TIME COMMITMENT:**

Dens meet from 2 to 4 times per month. The purpose of the den meetings is to complete achievements towards your rank badge and to have fun. The frequency of the den meetings as well as the time and location are left up to the Den Leader to arrange with the parents of the boys in the den. Den meetings last 1 to 2 hours.

### **FAMILY TIME COMMITMENT:**

Families are asked to commit time in two ways.

1. About one-third of the achievements necessary to earn your rank badge will be done with the den. The other two-thirds of the achievements will be done with the boy's family. This will involve a couple of hours per month.
2. In addition, since our pack is entirely volunteer-run, we ask that each family volunteer for at least one pack function (see next 2 pages). **In order for new boys to become new Cub Scouts, we must have new parents must become New Leaders.**

- ❖ **“I'm too busy.”** We fill in our time with things that are priorities. Make this activity with your son a priority.
- ❖ **“I'm unfamiliar with Scouting.”** Scouting provides books, meetings, training, and countless other avenues to help adult volunteers.
- ❖ **“I'm afraid of the unknown.”** Everyone was new and afraid at one point. With training and literature, its much easier than you may think.



# Welcome to Cub Scout Race to Scouting

2006-2007 School Year

## HOW MUCH TIME IS INVOLVED? (con't.)

<b>Position</b>	<b>Description</b>	<b>Effort</b>	<b>Committed</b>
Cub Master	MCs all Pack meetings. With Committee, plans and organizes Pack activities. Figure Head for the boys.	5-10 hours month	Jim Hansen
Committee Chair	Committee Member. With Committee, plans and organizes Pack activities. Point person for Committee Chairs. Oversees that the Pack is running according to the Committee's plans and members input.	5-10 hours month	
Assistant Cub Master	Assists in MC'ing all Pack meetings. With Committee, plans and organizes Pack activities. Figure Head.	5-10 hours month	
Treasurer	Committee Member. Handles all cash receipts and disbursements, ensuring that they are proper. Submits financial statements to the Committee monthly. Prepares a cash flow requirement analysis after each major "spending" event. Reconciles bank account.	2-4 hours per month. More during registration (Sept) and popcorn sales (Sept-Oct).	
Secretary/ Communications	Committee Member. Maintains the pack calendar. Prepares monthly pack newsletter. Maintains updated Pack membership in "Packmaster" software and distributes appropriate rosters to den leaders. Handles Pack registration / recharter (December) with BSA.	2-4 hours per month. Heavy at beginning of year for boy's registration and early Dec. for BSA recharter.	
Advancement	Tracks/purchases all achievements/awards for scouts based on Den Leader input.	2-4 hours per month	Sue Fajardo
Den Leader Coach	Guides new Den Leaders. Helps plan their initial meetings. Answers questions, encourages, etc. Tracks den' success for their 1 <sup>st</sup> year.	2-4 hours per month	
Popcorn Kernel	Leads, Coordinates, Encourages, etc. all efforts for the major Pack 507 fundraiser.	One time major effort (Sept-Oct)	Mike Virga
Assistant Popcorn Kernel	Assists in all efforts for the major Pack 507 fundraiser.	One time major effort (Sept-Oct)	
Community Service/ Leader Trainer/ Safety Officer	Initiates / coordinates all community service/fundraising activities. Schedules and ensures that all Pack 507 leaders have completed BSA required training and are following BSA guidelines.	2 hours per month	
Camping Committee Chair	Leads the planning, organizing and carrying out of all Pack camping activities following BSA guidelines	2-3 events throughout year.	Jim Hansen



# Welcome to Cub Scout Race to Scouting

2006-2007 School Year

## HOW MUCH TIME IS INVOLVED? (con't.)

<b>Position</b>	<b>Description</b>	<b>Effort</b>	<b>Committed</b>
Camping Committee (3 people)	Assists Camping Chair in planning, organizing and carrying out all Pack camping activities following BSA guidelines.	2-3 events throughout year	Maurice Morange
Blue & Gold Committee Chair	Leads the planning, organizing and carrying out of the BSA Birthday party.	One time event	Becky Cottingham
Blue & Gold Committee (3 people)	Assists the B&G chair in planning, organizing and carrying out of the Boy Scout Birthday party.	One time event	
Pine Wood Derby Chair	Leads the planning, organizing and carrying out of the Pine Wood Derby.	One time event	
Pine Wood Derby Committee (3 people)	Assists in the planning, organizing and carrying out of the Pine Wood Derby.	One time event	
Rain Gutter Regatta & Cavalcade Chair	Leads the planning, organizing and carrying out of the Rain Gutter Regatta and Cavalcade.	2 - One time events	Tom Bodeep
Rain Gutter Regatta & Cavalcade Committee (3 people)	Assists in the planning, organizing and carrying out of the Rain Gutter Regatta.	One time event	
Pack Greeter/Candy Count Coordinator	Fills the candy count jar and buys the prize. Greets pack members and families at the door and hands out info.	1-2 hours per month	
Pack Photographer	Keeper of Pack Photo Album	1 hour per month	
2003 Class B T-Shirt Contest Chair	Leads, plans and organizes the annual Class-B T-shirt design contest.	One time event	
2003 Summertime Activity Chair	Leads the planning, organizing and carrying out of 3 Summer Activities.	3 events during summer months	
2003 Summertime Committee (3 people)	Assists in the planning, organizing and carrying out of 3 Summer Activities	3 events during summer months	
Den Leader	Plans and Leads a group of 5-8 boys, including their own, through the individual levels of cub scouting.	5 hours month	Den 1- Den 2-B. May Den3- J. Johnson Den 5-B&G Garrett Den 11-R&B Cottingham Den 12-L. Stubel
Assistant Den Leader	Assists with the planning and leading of a group of 5-8 boys, including their own, through the individual levels of cub scouting.	5 hours month	Den1- Den 2- Den 3- Den 4- Den 5- Den11- Den12- C. Ross



# Welcome to Cub Scout Race to Scouting

2006-2007 School Year

## HOW MUCH DOES SCOUTING COST?

1. **PACK DUES:** Annual pack dues are \$70. This covers all pack activities from September through August.

\$10.00	National Council for Registration and Insurance
\$ 9.55	<i>Boy's Life</i> Magazine Subscription for your son
<u>\$50.45</u>	Directly to Pack Cooffers for pack activities and expenses
<b>\$70.00</b>	<b>ANNUAL PACK DUES</b>

Pack activities include camping, pinewood derby, Blue & Gold banquet, pack meeting entertainment, etc. Pack expenses include advancement awards/pins/belt loops, pinewood derby cars, raingutter regatta boats, pack t-shirt, graduation neckerchiefs and graduation handbooks.

None of the \$70 annual pack dues goes to pay for anyone's salary.

Siblings and other family members may have to pay for their participation in some Pack outings.

If you, or someone you know, need financial sponsorship, please call Jim Hansen or Brigitte Garrett. Information will be kept confidential.

2. **DEN DUES:** Den dues are determined by the Den Leader along with the parents of the den. This can range from \$20 to \$40 per year depending on activities. Some common methods of collecting den dues are:
  - Each boy brings \$1 per den meeting
  - A one-time \$20 due is collected
  - Den meeting location and expenses rotate among the parents of the den. The parent for that meeting pays for all materials

If your den goes out on an outing (i.e. skating rink, etc), typically each boy will pay his own way.

3. **SCOUT UNIFORM:** We uniform because it is a means of identify ourselves openly with the principles to which we are committed: character development, citizenship, values, physical and mental fitness. It is a bond which ties millions of Scouts throughout the United States. It is a way of making visible our commitment to a belief in God, loyalty to country, and to helping other people. Our pack typically uniforms in a shirt (short or long-sleeved), neckerchief, cap, and belt. Trousers, shorts, socks, and patch vest are optional.



# Welcome to Cub Scout Race to Scouting

2006-2007 School Year

## HOW MUCH DOES SCOUTING COST? (con't.)

(Note that pricing is subject to change)

<p><b><u>TIGER CUB</u></b> (1<sup>ST</sup> Graders)</p> <p><input type="checkbox"/> Youth T-Shirt \$ 8.15</p> <p><input type="checkbox"/> Tiger Cub Cap \$11.50</p> <p><input type="checkbox"/> Belt \$ 6.15</p> <p><input type="checkbox"/> Tiger Cub Handbook \$ 3.50</p> <p><input type="checkbox"/> <u>Adult T-Shirt</u> \$13.05</p> <p style="text-align: right;"><b>\$42.35 **</b></p>	<p><b><u>WOLF CUB</u></b> (2<sup>nd</sup> Graders)</p> <p><input type="checkbox"/> Short Sleeve Blue Shirt \$ 25.70 *</p> <p><input type="checkbox"/> Gold Neckerchief \$ 4.40</p> <p><input type="checkbox"/> Neckerchief Slide \$ 2.20</p> <p><input type="checkbox"/> Gold Cap \$11.50</p> <p><input type="checkbox"/> Belt \$ 6.15</p> <p><input type="checkbox"/> Wolf Cub Handbook \$ 4.95</p> <p><input type="checkbox"/> Pack Numerals('507') \$ 2.40</p> <p><input type="checkbox"/> <u>Den Numerals</u> \$ 1.20</p> <p style="text-align: right;"><b>\$58.50 **</b></p> <p style="text-align: right;"><b>\$58.50</b></p>
<p><b><u>BEAR CUB</u></b> 3<sup>rd</sup> Graders)</p> <p><input type="checkbox"/> Short Sleeve Blue Shirt \$ 25.70 *</p> <p><input type="checkbox"/> Blue Neckerchief \$ 4.40</p> <p><input type="checkbox"/> Neckerchief Slide \$ 2.20</p> <p><input type="checkbox"/> Blue Cap \$11.50</p> <p><input type="checkbox"/> Belt \$ 6.15</p> <p><input type="checkbox"/> Bear Cub Handbook \$ 4.95</p> <p><input type="checkbox"/> Pack Numerals ('507') \$ 2.40</p> <p><input type="checkbox"/> <u>Den Numerals</u> \$ 1.20</p> <p style="text-align: right;"><b>\$58.50 **</b></p> <p style="text-align: right;"><b>\$5x.x0</b></p>	<p><b><u>WEBELOS SCOUT</u></b> (4<sup>th</sup> and 5<sup>th</sup> Graders)</p> <p><input type="checkbox"/> Short Sleeve Tan Shirt \$ 26.95 *</p> <p><input type="checkbox"/> Blue Shoulder Loops \$ 1.65</p> <p><input type="checkbox"/> Plaid Neckerchief \$ 5.65</p> <p><input type="checkbox"/> Neckerchief Slide \$ 2.20</p> <p><input type="checkbox"/> Plaid Cap \$11.50</p> <p><input type="checkbox"/> Belt \$ 8.45</p> <p><input type="checkbox"/> Webelos Handbook \$ 5.50</p> <p><input type="checkbox"/> Webelos Colors \$ 3.20</p> <p><input type="checkbox"/> Pack Numerals('507') \$ 2.40</p> <p><input type="checkbox"/> <u>Den Numerals</u> \$ 1.20</p> <p style="text-align: right;"><b>\$68.70 **</b></p>

\* US Flag, Atlanta Area Council, and World Crest patches are pre-sewn.

\*\* Prices are from the 2002 Boy Scouts of America Official Retail Catalog – Leader Edition. Prices may vary slightly at the Scout Shop.



## Welcome to **Cub Scout Race to Scouting**

2006-2007 School Year

### **HOW MUCH DOES SCOUTING COST? (con't.)**

Scouting equipment can be purchased at any council scout shop, through the catalogue or through the supply division at [www.ScoutStuff.org](http://www.ScoutStuff.org).

The main scout shop for the Atlanta Area Council is at the council offices at 1800 Circle 75 Parkway, which is northwest of the I-285 & I-75 intersection.

An easy way to get there is to take I 285 west to US41 which is just west of the I-75 exit.

Go north (right) on US41 and take a right at the first light which is Circle 75 parkway.

The Scout shop will be a couple miles on the right.

There are also scout shops at Bert Adams Scout Reservation in Covington and Woodruff Scout Reservation in Blairsville.